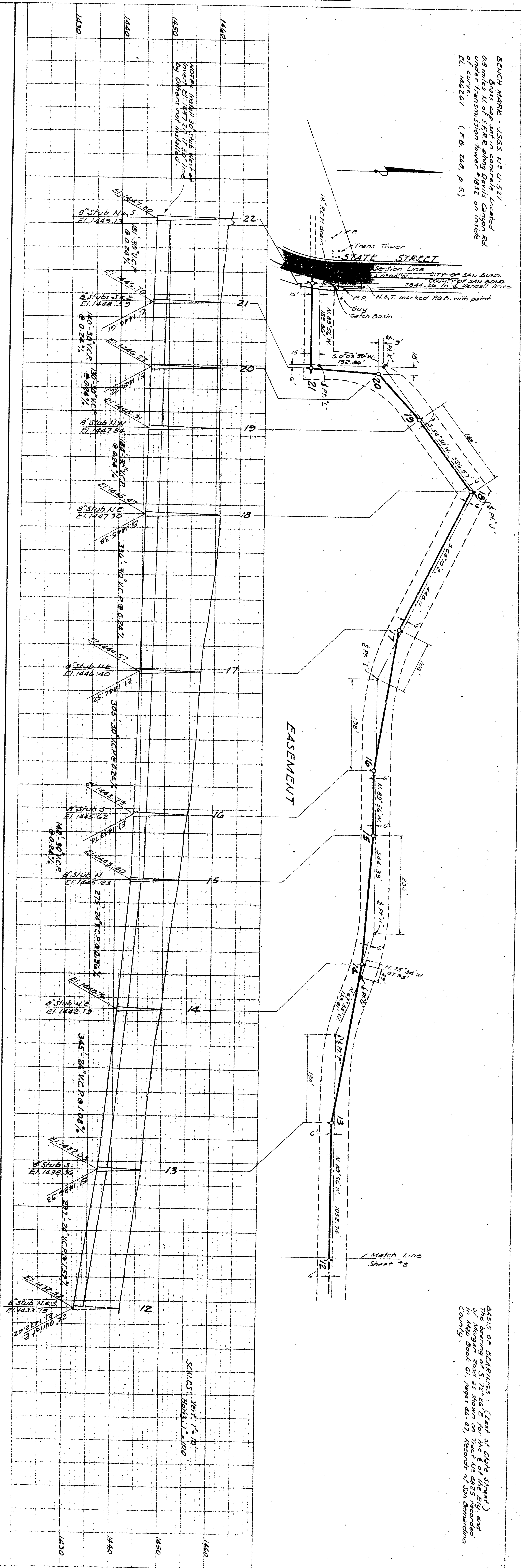


PLAN SURVEYED
 NOTED
 ARCHITECT CHECKED
 BY CITY ENGINEER

GRAND MARSH - 2585 U.S. 101
 0.8 miles W. of State along Devil Canyon Rd.
 under transmission tower #1832 on inside
 of canal (F.B. 248, p. 5)



THIS OR BEYOND (East of State Street)
 of Morgan Road as shown on sheet #1482 of record
 of map Book C, pages 46, 47, Records of San Bernardino
 County

PLANS & PROFILES INTERCEPTING SEWERS SHEET 3
 PLAN No. 3346
 SAN BERNARDINO, CALIFORNIA
 CIVIL ENGINEERING COMPANY